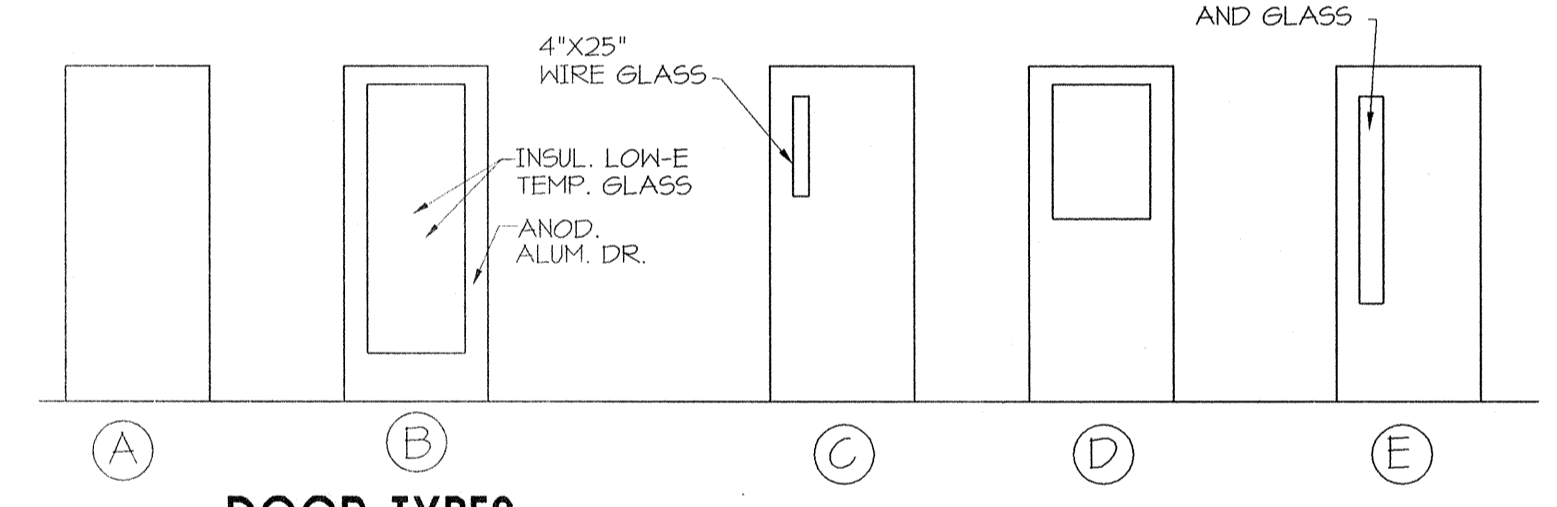


- PROVIDE SMOKE SEALS AT RATED DOORS
HARDWARE SET 1: FINISH TO MATCH ALUM. DOOR
- EACH PAIR DOORS TO HAVE:
2 EA CONTINUOUS GEAR HINGES PEMKO KDFM Ø3HD
1 EXIT DEVICE SARGENT II-16-Ø510 X Ø62
1 EXIT DEVICE SARGENT II-16-Ø504 ETL X Ø62
2 CLOSERS SARGENT 351-CPSH X 5Ø1-2
2 MOUNTING PLATES SARGENT 351-D
1 THRESHOLD REESE 5205A
2 DOOR SWEEPS REESE 354A
(WEATHERSTRIPPING BY DOOR SUPPLIER)
- HARDWARE SET 2: FINISH TO MATCH ALUM. DOOR
- EACH PAIR DOORS TO HAVE:
2 EA CONTINUOUS GEAR HINGES PEMKO KDFM Ø3HD
2 EACH PUSH PLATES - SARGENT ØØØ3 -
2 EACH PULLS - SARGENT ØØ2-
1 REMOVABLE MULLION SARGENT LØØØA
2 CLOSERS SARGENT 351-CPSH X 5Ø1-2
2 MOUNTING PLATES SARGENT 351-D
- HARDWARE SET 3
- 3 HINGES MCKINNEY TA2714 4 1/2 X 4 1/2 2ØD
COMMUNICATING LOCKSET SARGENT 1ØØ3Ø 152ØD
1 WALL STOP
- HARDWARE SET 4
- 3 HINGES MCKINNEY TA2714 4 1/2 X 4 1/2 2ØD
1 STOREROOM LOCKSET SARGENT 1ØØØ4
1 CLOSER SARGENT 35Ø SERIES
1 WALL BUMPER ROCKWOOD 4ØØ 1532D
- HARDWARE SET 5
- 3 HINGES MCKINNEY TA2714 4 1/2 X 4 1/2 2ØD
1 CLASSROOM LOCKSET SARGENT 1ØØ3T
1 CLOSER SARGENT 35Ø SERIES
1 WALL BUMPER ROCKWOOD 4ØØ 1532D
- HARDWARE SET 6
- 3 HINGES MCKINNEY TA2714 4 1/2 X 4 1/2 2ØD
1 STOREROOM LOCKSET SARGENT 1ØØØ4
1 WALL BUMPER ROCKWOOD 4ØØ 1532D
- HARDWARE SET 7
- 6 HINGES MCKINNEY TA2714 4 1/2 X 4 1/2 2ØD
1 CLASSROOM LOCKSET SARGENT 1ØØ3T
2 WALL STOPS
2 CLOSERS SARGENT 35Ø SERIES
AUTOMATIC FLUSH BOLT
- HARDWARE SET 8
- 6 HINGES MCKINNEY TA2714 4 1/2 X 4 1/2 2ØD
2 PANIC HARDWARE - SARGENT 12-ØØ13 ETL 152ØD
2 CLOSERS SARGENT 35Ø SERIES
KICKPLATE ROCKWOOD Ø"X2"LDW 32D
2 WALL BUMPER ROCKWOOD 4ØØ 32D
- HARDWARE SET 9
- 3 HINGES MCKINNEY TA2714 4 1/2 X 4 1/2 2ØD
PANIC HARDWARE - SARGENT 12-ØØ13 ETL 152ØD
CLOSER SARGENT 35Ø SERIES
KICKPLATE ROCKWOOD Ø"X2"LDW 32D
1 WALL BUMPER ROCKWOOD 4ØØ 32D
- HARDWARE SET 10
- 3 HINGES MCKINNEY TA2714 4 1/2 X 4 1/2 2ØD
1 OFFICE LOCKSET SARGENT 1ØØØ5 152ØD
1 WALL BUMPER ROCKWOOD 4ØØ 32D
- HARDWARE SET 11
- 3 HINGES MCKINNEY TA2714 4 1/2 X 4 1/2 2ØD
1 PRIVACY LOCKSET SARGENT 1ØØØ5
1 WALL BUMPER ROCKWOOD 4ØØ 32D
- HARDWARE SET 12
- CONTINUOUS GEAR HINGES PEMKO KDFM Ø3HD
PANIC HARDWARE - SARGENT 12-ØØØ4 ETL 152ØD
CLOSER SARGENT 35Ø SERIES
KICKPLATE ROCKWOOD Ø"X2"LDW 32D
THRESHOLD
WEATHERSTRIPPING
- HARDWARE SET 13
- 3 HINGES MCKINNEY TA2714 4 1/2 X 4 1/2 2ØD
1 CLASSROOM LOCKSET SARGENT 1ØØ3T
1 WALL BUMPER ROCKWOOD 4ØØ 32D
- HARDWARE TYPE 14
- 3 HINGES MCKINNEY TA2714 4 1/2 X 4 1/2 NRP 2ØD
1 CLASSROOM LOCKSET SARGENT Ø23T LNL 2ØD
1 CLOSER SARGENT 351 PSH EN
1 KICKPLATE ROCKWOOD K1Ø5Ø 1Ø"X34" B4E CØK 1532D
1 WEATHERSTRIP PEMKO 2Ø4 AV 1 X 3Ø" 2 X Ø4" TEK SCREW
1 DOOR BOTTOM PEMKO 315 CN 3Ø"
1 THRESHOLD PEMKO 171 A 3Ø"
- HARDWARE SET 15
- 3 HINGES MCKINNEY TA2714 4 1/2 X 4 1/2 2ØD
FULL ROCKWOOD 1Ø7 X 1ØØ - 3 1/2X15 32D
PUSH PLATE ROCKWOOD 1ØØ-ØØ16 32D
KICKPLATE ROCKWOOD Ø"X2"LDW 32D
1 CLOSER SARGENT 35Ø SERIES
1 WALL BUMPER ROCKWOOD 4ØØ 32D
- HARDWARE SET 16
- REUSE EXISTING HARDWARE
EXISTING PANIC HARDWARE

DOOR SCHEDULE

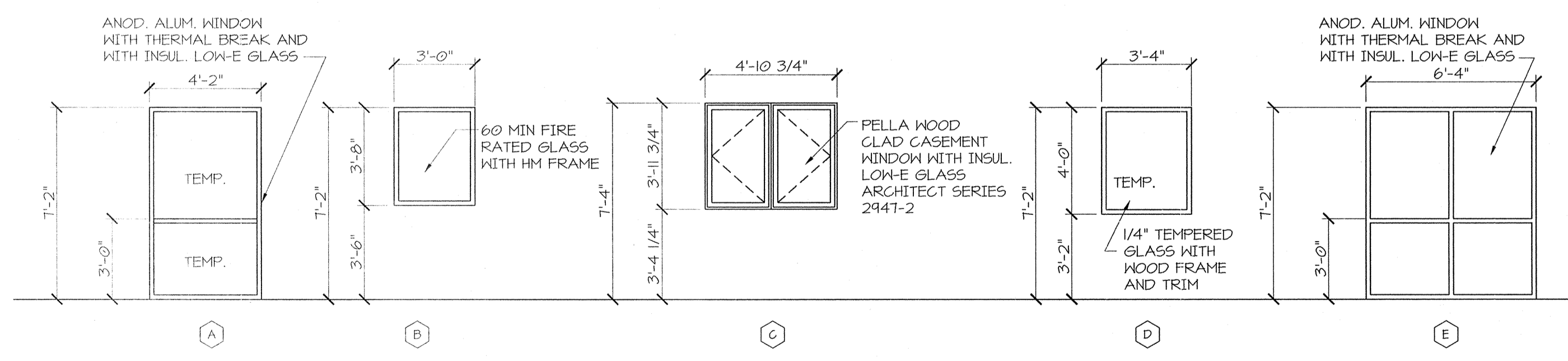
DOOR NUMBER	DOOR SIZE	DOOR TYPE	DOOR MATL.	FRAME MATL.	HRDWRE TYPE	FIRE RATE	REMARKS
L01	PR 3'-0" X 7'-0"	B	ALUM.	ALUM.	1	-	
L02	PR 3'-0" X 7'-0"	B	ALUM.	ALUM.	2	-	
L03	3'-0" X 7'-0" X 1 3/4"	A	WD/SC	WD	15	-	
L04	3'-0" X 7'-0" X 1 3/4"	A	WD/SC	WD	15	-	
L05	3'-0" X 7'-0" X 1 3/4"	A	WD/SC	HM	6	-	
L06	3'-0" X 7'-0" X 1 3/4"	A	WD/SC	HM	5	1 HR.	
L07	3'-0" X 7'-0" X 1 3/4"	A	WD/SC	HM	9	1 HR.	
L08	3'-0" X 7'-0" X 1 3/4"	A	WD/SC	WD	5	-	
L09	3'-0" X 7'-0" X 1 3/4"	A	WD/SC	WD	5	-	
L10	3'-0" X 7'-0" X 1 3/4"	A	WD/SC	WD	10	-	
L11	3'-0" X 7'-0" X 1 3/4"	A	WD/SC	WD	10	-	
L12	3'-0" X 7'-0" X 1 3/4"	A	WD/SC	WD	10	-	
L13	2'-8" X 7'-0" X 1 3/4"	E	WD/SC	WD	EXIST.	-	RELOCATED EXISTING DOOR AND FRAME
L14	PR 3'-0" X 7'-0" X 1 3/4"	E	WD/SC	WD	EXIST.	-	RELOCATED EXISTING DOOR AND FRAME
L15	2'-8" X 7'-0" X 1 3/4"	E	WD/SC	WD	EXIST.	-	RELOCATED EXISTING DOOR AND FRAME
L01	PR 3'-0" X 7'-0"	B	ALUM.	ALUM.	1	-	4" HEAD
L02	PR 3'-0" X 7'-0" X 1 3/4"	C	WD/SC	HM	Ø	1 HOUR	
L03	PR 3'-0" X 6'-8" X 1 3/4"	B/A	HM	HM	16	-	RELOCATED EXIST. DOOR FROM ROOM 121
L04	PR 3'-0" X 7'-0" X 1 3/4"	A	WD/SC	HM	7	1 HOUR	
L05	3'-0" X 7'-0" X 1 3/4"	A	WD/SC	WD	13	-	
L06	3'-0" X 7'-0" X 1 3/4"	A	HM	WD	3	-	
L07	3'-0" X 7'-0" X 1 3/4"	A	WD/SC	WD	13	-	
L08	3'-0" X 7'-0" X 1 3/4"	A	WD/SC	WD	6	-	
L09	3'-0" X 7'-0" X 1 3/4"	A	WD/SC	HM	4	1 HR.	
L10	3'-0" X 7'-0" X 1 3/4"	A	WD/SC	WD	13	-	
L11	3'-0" X 7'-0" X 1 3/4"	A	WD/SC	WD	13	-	
L12	3'-0" X 7'-0" X 1 3/4"	A	WD/SC	WD	6	-	
L13	3'-0" X 7'-0" X 1 3/4"	A	WD/SC	HM	9	1 HR.	
L14	PR 3'-0" X 7'-0"	B	ALUM.	ALUM.	1	-	
L15	3'-0" X 7'-0" X 1 3/4"	A	WD/SC	WD	15	-	
L16	3'-0" X 7'-0" X 1 3/4"	A	WD/SC	WD	15	-	
L17	3'-0" X 7'-0" X 1 3/4"	A	WD/SC	HM	4	1 HR.	
L18	3'-0" X 7'-0" X 1 3/4"	A	WD/SC	WD	13	-	
L19	2'-6" X 6'-8" X 1 3/4"	A	WD/SC	WD	13	-	
L20	3'-0" X 7'-0" X 1 3/4"	A	HM	HM	14	-	INSULATED
L21	3'-0" X 7'-0" X 1 3/4"	A	WD/SC	WD	13	-	
L22	3'-6" X 7'-0" X 1 3/4"	A	HM	HM	12	-	INSULATED
L23	2'-6" X 6'-8" X 1 3/4"	A	WD/SC	WD	13	-	
L24	3'-0" X 7'-0" X 1 3/4"	A	WD/SC	WD	10	-	
L25	3'-0" X 7'-0" X 1 3/4"	C	WD/SC	HM	9	1 HR.	
L26	4'-0" X 7'-0" X 1 3/4"	C	WD/SC	HM	17	1 HR.	
L27	4'-0" X 7'-0" X 1 3/4"	C	WD/SC	HM	17	1 HR.	
L28	3'-0" X 7'-0" X 1 3/4"	A	HM	HM	4	1 HR.	SEE ELEVATOR ALT. NOTE - SHEET A-1.1

- EXTERIOR DOORS SHALL BE OPENABLE FROM THE INSIDE WITHOUT SPECIAL KNOWLEDGE OR EFFORT AND WITH A SINGLE HAND.
- VERIFY HARDWARE FINISH WITH OWNER.
- DOOR HARDWARE SHALL COMPLY WITH N.A.S. 4.13.9, 4.13.10, AND 4.13.11.



DOOR TYPES

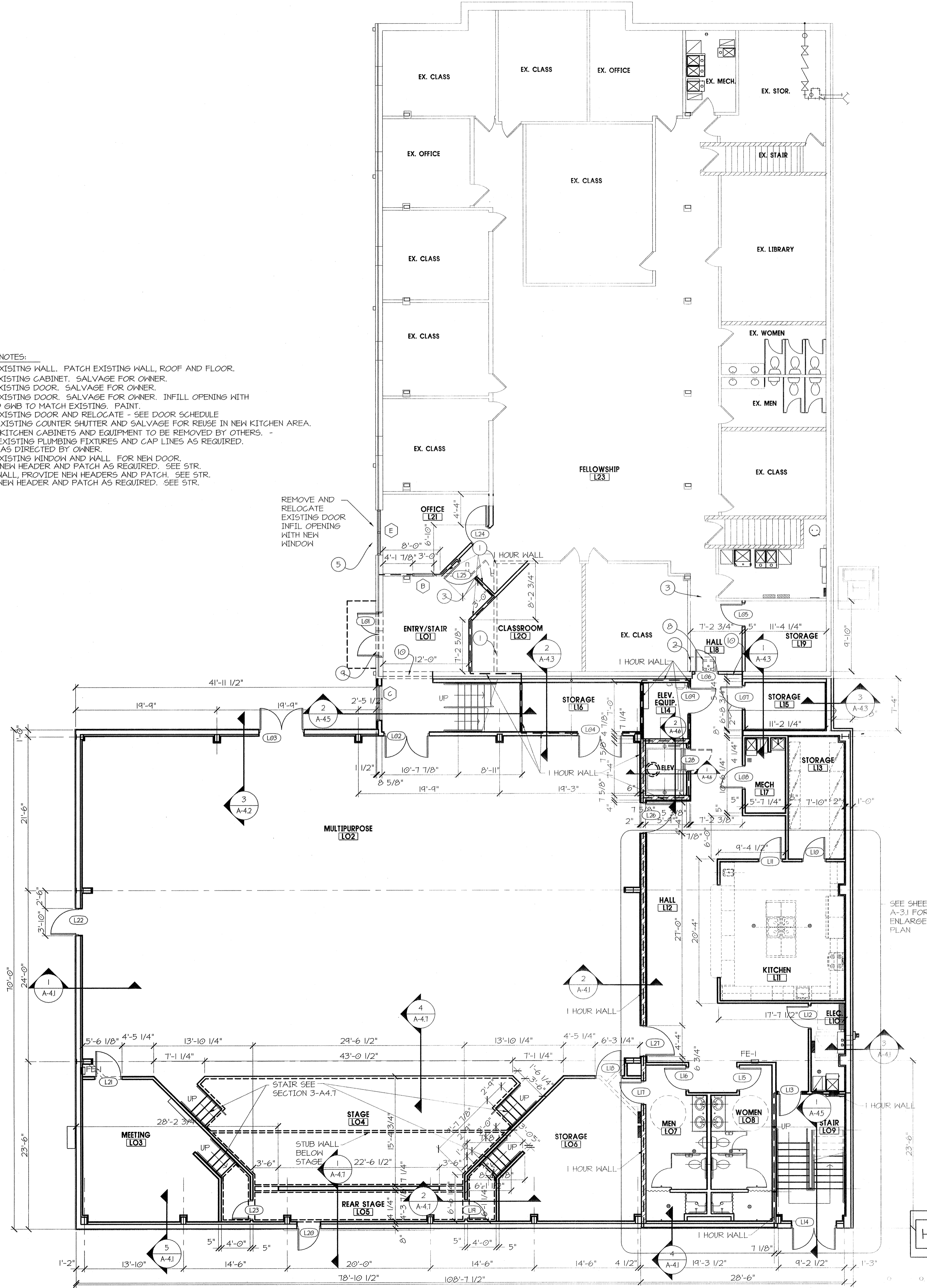
- HARDWARE SET 17
- 3 HINGES MCKINNEY TA2714 4 1/2 X 4 1/2 2ØD
PANIC HARDWARE - SARGENT 12-ØØ13 ETL 152ØD
CLOSER SARGENT 35Ø SERIES
KICKPLATE ROCKWOOD Ø"X2"LDW 32D
SMOKE DETECTORS EACH SIDE OF DOOR



WINDOW ELEVATIONS

PROVIDE BRONZE FINISH ON WINDOWS

- DEMOLITION NOTES:
- REMOVE EXISTING WALL. PATCH EXISTING WALL, ROOF AND FLOOR.
 - REMOVE EXISTING CABINET. SALVAGE FOR OWNER.
 - REMOVE EXISTING DOOR. SALVAGE FOR OWNER.
 - REMOVE EXISTING DOOR. SALVAGE FOR OWNER. INFILL OPENING WITH STUDS AND GIBB TO MATCH EXISTING. PAINT.
 - REMOVE EXISTING DOOR AND RELOCATE - SEE DOOR SCHEDULE
 - REMOVE EXISTING COUNTER SHUTTER AND SALVAGE FOR REUSE IN NEW KITCHEN AREA.
 - EXISTING KITCHEN CABINETS AND EQUIPMENT TO BE REMOVED BY OTHERS.
 - REMOVE EXISTING PLUMBING FIXTURES AND CAP LINES AS REQUIRED. SALVAGE AS DIRECTED BY OWNER.
 - REMOVE EXISTING WINDOW AND WALL FOR NEW DOOR. PROVIDE NEW HEADER AND PATCH AS REQUIRED. SEE STR.
 - REMOVE WALL, PROVIDE NEW HEADERS AND PATCH. SEE STR. PROVIDE NEW HEADER AND PATCH AS REQUIRED. SEE STR.



LOWER LEVEL PLAN

SCALE: 1/8" = 1'-0"